

27TH ANNUAL PAN PHILADELPHIA NEUROSURGERY CONFERENCE DECEMBER 4, 2015

THE UNION LEAGUE OF PHILADELPHIA • PHILADELPHIA, PA

Course Directors

Michael W. Weaver, MD, FAANS

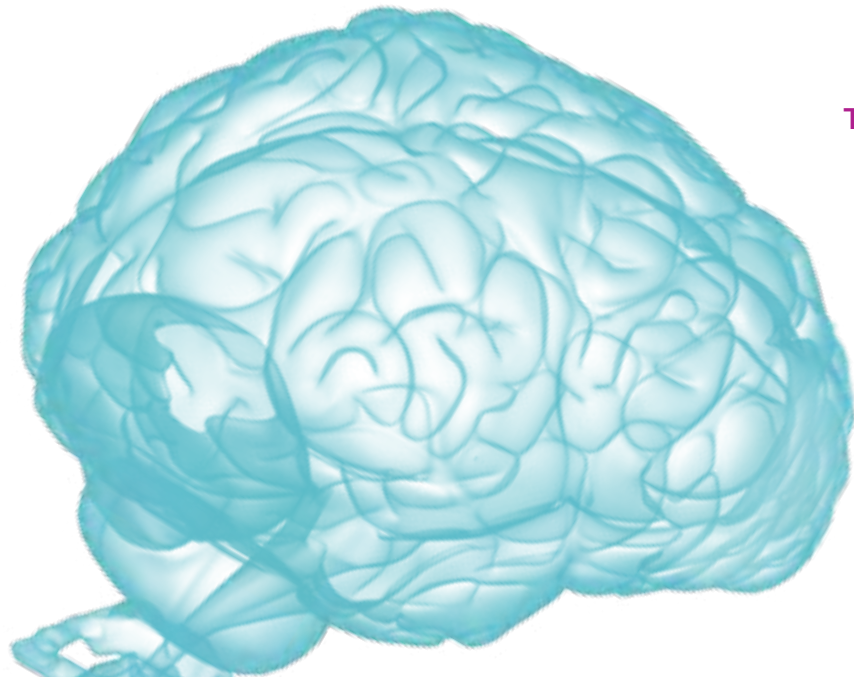
Professor and Chair of Neurosurgery
Lewis Katz School of Medicine at Temple University

M. Sean Grady, MD, FACS

Charles Harrison Frazier Professor and Chair of Neurosurgery
Perelman School of Medicine
University of Pennsylvania

Robert H. Rosenwasser, MD, FACS, FAHA

Jewell L. Osterholm, MD Professor and Chair of Neurological Surgery
Professor of Radiology
Director, Division of Neurovascular Surgery and Endovascular Neurosurgery
Sidney Kimmel Medical College at Thomas Jefferson University



Course Description

The 27th Annual Pan Philadelphia Neurosurgery Conference is co-directed by three area Neurosurgical Training Programs: Lewis Katz School of Medicine at Temple University, the Perelman School of Medicine at the University of Pennsylvania and Sidney Kimmel Medical College at Thomas Jefferson University. This year's program will review the impact on outcomes resulting from three decades of research in severe traumatic brain injury (TBI), presented by **Raj K. Narayan, MD, FACS**, Professor and Chairman of Neurosurgery and Director, Cushing Neuroscience Institute at Hofstra North Shore-LIJ School of Medicine. During the Controversy Sessions of the program, participants will have the opportunity to join the discussion with renowned leaders, as they debate difficult cases in the management of head and spinal cord injuries. Additionally, a resident research competition will provide an analytical review of current research endeavors.

We hope you will join us for this invaluable educational event!

Conference Location

The 27th Annual Pan Philadelphia Neurosurgery Conference will take place on Friday, December 4, 2015 at The Union League of Philadelphia, located at 140 South Broad Street, Philadelphia, PA 19102.

Accreditation

Sidney Kimmel Medical College at Thomas Jefferson University is accredited by the ACCME to provide continuing medical education for physicians. Sidney Kimmel Medical College at Thomas Jefferson University designates this live activity for a maximum of **4.5 AMA PRA Category 1 Credit(s)**[™]. Physicians should claim only the credit commensurate with the extent of their participation in the activity.

Accommodations

The Inn at the League, 140 South Broad Street, Philadelphia, PA 19102

Room Rate: \$195 (per night, plus tax)

To make reservations, please call the Inn at the League at, 215-587-5570 and identify yourself as part of the "PAN Philadelphia Room Block" in order to be offered the special rate. Reservations must be received no later than **November 14, 2015**.

Course Objectives

At the conclusion of this course, participants should be able to:

1. Review and assess the role of intracranial monitoring to include fiberoptic monitor, external ventricular drain and brain tissue oxygenation monitor in the TBI patient.
2. Discuss the indication and timing of craniectomy for the treatment of the TBI patient as well as the pros and cons of autologous (stored) versus fabricated cranioplasty.
3. Examine the timing of intervention on the acute spinal cord injured patient with attention to pros and cons of early intervention.
4. Discuss the type of operative intervention (anterior, posterior or combined) for the spinal cord injured patient.
5. Assess individual practice in light of the information and discussions during the course, and identify specific strategies to implement as part of a continuing improvement process for practices.

Dress Code

The Union League's Dress Code requires Business Casual Attire for ladies and gentlemen. Gentlemen are required to wear a jacket and collared shirt at all times on the first floor members-only section of the League House. Jacket and tie are preferred. For women dresses, blouses and skirts, or pants suit are appropriate attire. Pants should be tailored and are acceptable when worn with a jacket or other garments which would be appropriate if worn with a skirt. At no time are jeans, sneakers, athletic clothing, or shorts permitted on the first or second floor of The League House. The Union League reserves the right to refuse admittance to anyone not adhering to the Dress Code.

27TH ANNUAL PAN PHILADELPHIA NEUROSURGERY CONFERENCE

PROGRAM AGENDA FOR FRIDAY DECEMBER 4, 2015 (Subject to change)

7:30 AM Registration, Continental Breakfast, and Exhibits

8:00 AM Welcome and Introduction

Michael W. Weaver, MD, FAANS

Controversy Session I: Cranial - Controversies in the Management of the Head Injured Patient

8:15 AM What Type of Intracranial Monitoring for the TBI Patient: Intracranial Pressure Monitor (ICP Bolt), External Ventricular Drain, Brain Tissue Oxygenation Monitor or a Combination?

Use of Craniectomy in Treatment of ICP with Focus on Timing of Intervention and Considerations for Cranioplasty

Moderator: *Charles N. Munyon, MD*

Panelists: *H. Isaac Chen, MD*

Jack I. Jallo, MD, PhD, FACS

Philip A. Villanueva, MD

9:30 AM Keynote Lecture: Improving Outcomes from Severe Traumatic Brain Injury – A Brief Review of the Research in the Field Over the Past 30 Years

Raj K. Narayan, MD, FACS

Director, Cushing Neuroscience Institute

Hofstra North Shore-LIJ School of Medicine

Hempstead, New York

10:30 AM Break & Exhibits

11:00 AM Resident Research Presentations

Moderators: *Charles N. Munyon, MD*

Joseph V. Queenan, MD, FACS

12:00 PM Lunch & Exhibits

12:45 PM Resident Award Presentation

Controversy Session II: Spine - Controversies in the Management of Spinal Cord Injury

1:00 PM Timing of Intervention for Acute Spinal Cord Injury to Include Central Cord Injury from Cervical Spondylosis

Surgical Options for ASI: Anterior, Posterior or 360

Moderator: *Joseph V. Queenan, MD, FACS*

Panelists: *Bong-Soo Kim, MD, FAANS*

Srinivas K. Prasad, MD, MS

James Schuster, MD, PhD

2:15 PM Adjourn/Closing Remarks

Michael W. Weaver, MD, FAANS

FACULTY

Guest Speaker

Raj K. Narayan, MD, FACS

Professor and Chairman, Neurosurgery
Director, Cushing Neuroscience Institute
Hofstra North Shore-LIJ School of Medicine
Hempstead, New York

Co-Scientific Program Chairs/Moderators

Charles N. Munyon, MD

Assistant Professor, Neurosurgery
Lewis Katz School of Medicine at Temple University

Joseph V. Queenan, MD, FACS

Associate Professor, Neurosurgery
Lewis Katz School of Medicine at Temple University

Presenters

Lewis Katz School of Medicine at Temple University

Bong-Soo Kim, MD, FAANS

Associate Professor, Neurosurgery

Philip A. Villanueva, MD

Professor, Clinical Neurosurgery

Perelman School of Medicine at the University of Pennsylvania

H. Isaac Chen, MD

Assistant Professor, Neurosurgery

James Schuster, MD, PhD

Associate Professor, Neurosurgery

Sidney Kimmel Medical College at Thomas Jefferson University

Jack I. Jallo, MD, PhD, FACS

Professor, Neurological Surgery

Srinivas K. Prasad, MD, MS

Assistant Professor, Neurological Surgery

FACULTY DISCLOSURE

All faculty participating in continuing medical education activities sponsored by Sidney Kimmel Medical College at Thomas Jefferson University are expected to disclose to the activity audience any real or apparent conflict(s) of interest related to the content of their presentation(s). Full disclosure of faculty relationships will be made at the activity. Jefferson Conflict of Interest resolution process may result in changes to the agenda.

REGISTRATION

REGISTRATION FEES:

Practicing Physician	\$300
Other Healthcare Professional	\$200

The Registration Fee includes all course materials, CE Certificate, and continental breakfast, buffet lunch and refreshment break. The Registration Fee does not include parking. Your registration will be confirmed via email. The deadline for registration is **December 2, 2015**.

Refund/Cancellation Policy

Requests for refunds must be submitted in writing and received in the Office of CME by **December 2, 2015**. There will be no refunds after this date. There will be a \$50.00 processing fee for all refunds. Registrants who fail to attend the conference are responsible for the entire fee. All refunds will be processed after the conference. The University reserves the right to cancel or postpone this course due to unforeseen circumstances. In the event of a cancellation or postponement, the University will refund registration fees, but is not responsible for related costs or expenses to participants, including cancellation fees assessed by hotels, airlines or travel agencies.

For more information, call the Office of Continuing Medical Education at 1-888-JEFF-CME (888-533-3263) or 215-955-6992.

If you have any special needs, please contact the Office of Continuing Medical Education by **December 2, 2015**.

Here's How to Register Online Today at CME.Jefferson.edu:

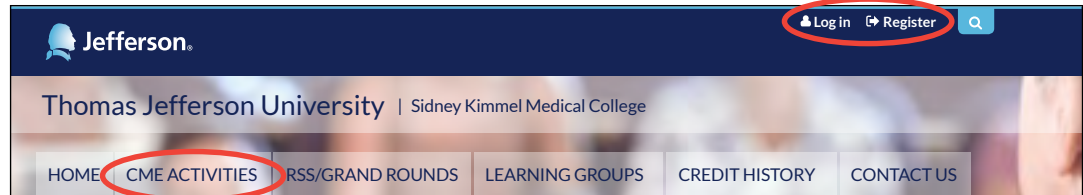
Important Browser Information – site works best on Google CHROME, Mozilla FIREFOX, SAFARI or OPERA. Please be sure you are running the most recent version of your browser.

Step #1 – Login to your account on CPD@JeffLearn™ at CME.Jefferson.edu.

- If you do not have an account, step by step instructions can be found on the CPD@JeffLearn™ webpage.
- Click "Login" if you have an account. Click "Register" to create an account

Step #2 – Once you are logged in, you may register for this conference by clicking the "CME Activities" tab located on the top of the page, and clicking on the activity name "27th Annual Pan Philadelphia Neurosurgery Conference"

- Review the course webpage, and scroll down to see the registration options.
- Complete the online registration process.
- You will receive a confirmation email of your successful registration.
- If you are unable to attend, cancellation fees may be applied. Please refer to the Cancellation/Refund Policy located on the course webpage at CME.Jefferson.edu.



Registration Deadline is: December 2, 2015

Registrations should be submitted online by this date. Registrations cannot be processed without payment.

Should you need additional assistance or if you have any special needs, please contact the Office of CME at 215-955-6992 or via email at jeffersoncme@Jefferson.edu. Paper registration available upon request.