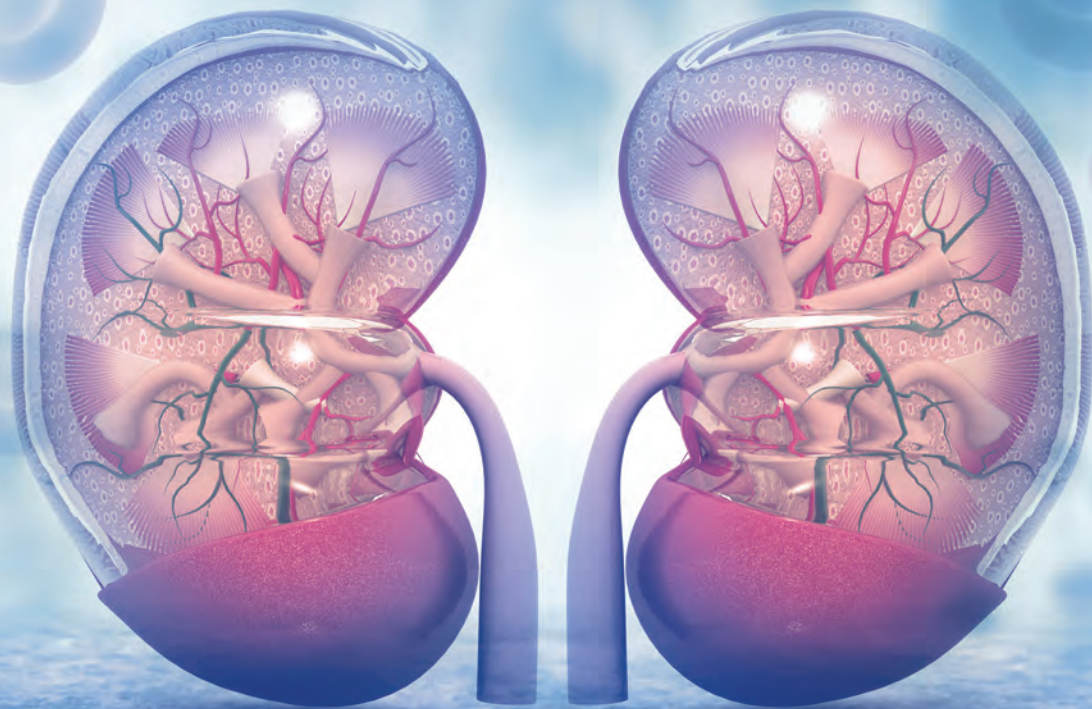


INAUGURAL JEFFERSON

Renal Update Symposium



**Earn
ABIM-MOC
Points!**

REGISTER TODAY AT CME.JEFFERSON.EDU!

INAUGURAL JEFFERSON Renal Update Symposium

Dorrance H. Hamilton Building, 1001 Locust Street, Philadelphia, PA 19107

Saturday, September 23, 2017 | 8:00AM - 2:30PM

This inaugural conference is tailored to meet the needs of healthcare professionals involved in the diagnosis, management, and treatment of patients with chronic kidney disease (CKD).

Why you should attend:

- Identify the risk factors and epidemiology of CKD and examine the key factors of progression and complications of this disease.
- Develop effective plans to best manage hypertension, infections and malignancies post-transplant.
- Develop a systematic, team approach to improving patient outcomes in the assessment, management, and treatment of this disorder.
- Earn ABIM-MOC points for selected presentations.
- Network with expert faculty and colleagues in the field throughout the conference.

The following topics will be explored:

- *CKD: Epidemiology, Classification, and Complications*
- *CKD Management and Transition to End Stage Renal Disease (ESRD)*
- *Diabetic Kidney Disease - An Update on New Therapies*
- *Kidney Transplant: What the General Practitioner Needs to Know*
- *Post Kidney Transplant Complications: Infection and Malignancy*
- *Hypertension Management in Chronic Kidney Disease and Future Guidelines*

REGISTER TODAY!

For further information, call **1-888-JEFF-CME** or visit us online at **CME.Jefferson.edu***

*Please visit the course webpage for the full conference agenda and applicable registration fees. Registration fee includes all course materials, access to presentations online, CE certificate, breakfast, refreshment breaks and lunch. Parking is not included.

ACCREDITATION INFORMATION:

PHYSICIANS: Sidney Kimmel Medical College at Thomas Jefferson University is accredited by the ACCME to provide continuing medical education for physicians. Sidney Kimmel Medical College at Thomas Jefferson University designates this live activity for a maximum of **5.25 AMA PRA Category 1 Credits™**. Physicians should claim only the credit commensurate with the extent of their participation in the activity.



Application for CME has been filed with the American Academy of Family Physicians. Determination of credit is pending.

NURSES/NURSE PRACTITIONERS: This education activity will be submitted to the American Association of Nurse Practitioners for approval of up to **5.25 contact hours** of accredited education.

PHYSICIAN ASSISTANTS: The American Academy of Physician Assistants accepts **AMA PRA Category 1 Credit(s)™** (www.aapa.org).



Follow us on Twitter @JeffCME for symposium updates!



Office of Continuing Medical Education
1020 Locust Street, Suite M5
Philadelphia, PA 19107

NON-PROFIT ORG
U.S. POSTAGE
PAID
PERMIT NO. #117
SOUTHEASTERN, PA
19399